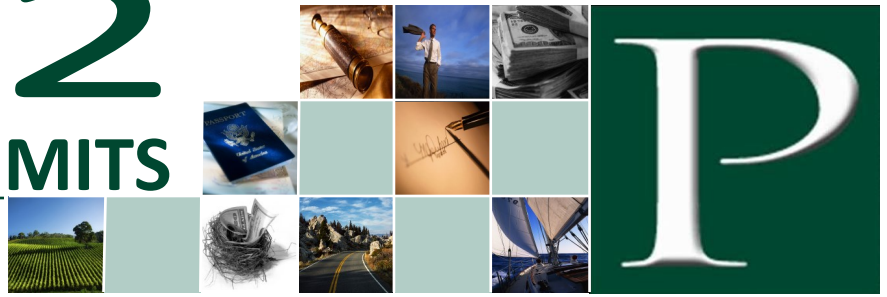


# 2022

## ANNUAL PLAN LIMITS



|   |            |
|---|------------|
| Maximum 401(k) Elective Deferrals<br>(Also applies to 403(b) and 457) | \$ 20,500  |
| 401(k) Catch-Up Limit (Age 50+)                                       | \$ 6,500   |
| Annual Defined Contribution Limit                                     | \$ 61,000  |
| Annual Defined Benefit Limitation                                     | \$ 245,000 |
| Annual Compensation Limit<br>(Also applies to SEP)                    | \$ 305,000 |
| Highly Compensated Employee Determination                             | \$ 135,000 |
| Key Employee Compensation Determination                               | \$ 200,000 |

|   |              |
|---|--------------|
| ESOP Threshold Account Balance Limitation | \$ 1,230,000 |
| ESOP One-Year Extension Limitation        | \$ 245,000   |

|                                   |           |
|-----------------------------------|-----------|
| Maximum SIMPLE Employee Deferrals | \$ 14,000 |
| SIMPLE Catch-Up Limit (Age 50+)   | \$ 3,000  |
| SIMPLE Minimum Compensation       | \$ 650    |

|                              |          |
|------------------------------|----------|
| IRA Contribution Limit       | \$ 6,000 |
| IRA Catch-Up Limit (Age 50+) | \$ 1,000 |

|  |            |
|--|------------|
| Social Security Wage Base                      | \$ 147,000 |
| Self-Employment Tax Rate                       | 12.4%      |
| Self-Employed Medicare Tax Rate                | 2.9%       |
| Combined Self-Employment Tax Rate              | 15.3%      |
| Social Security Tax Rate                       | 6.2%       |
| Medicare Tax Rate                              | 1.45%      |
| Combined Social Security and Medicare Tax Rate | 7.65%      |



**THE PRICE COMPANY**  
Independent Retirement Plan Administrators

5151 N. Palm Avenue, Suite 920 • Fresno, CA 93704  
(559) 224-7656 • (888) 558-1817 Toll Free  
www.ThePriceCompany.com • info@ThePriceCompany.com